

The Japan Rubber Futures Weekly Report:

03 Oct 2022 – 07 Oct 2022

Note: 3Q Tankan Large Manufacturing Index lower at 8, Japan Sept PMI 50.8, Tokyo CPI Sep +2.8% on Year

Rubber Futures Report:

World rubber futures closed higher amid the one-week Chinese Golden week holidays. The news of heavy monsoon rain and floods in some regions of Thailand, the Northeast and Petchabun Provinces, triggered buying pressure on Thursday and Friday. The OSE futures contracts increased by 2.7% due to active short-covering transactions. The SICOM futures contracts rose 1.7% with new buying amid light trading volume. SHFE and INE markets were closed for one week for the national holidays and will resume on Monday, Oct. 10th. Japan reported a surprisingly weaker 3Q Tankan result for Large Manufacturing at 8, while Japan's vehicle sales in September jumped 17.8% unexpectedly. Further interest rate hike expectations by major central banks and the fear of recession continued to curb global market sentiments. The US Sept. unemployment rate fell 0.2 percentile points to 3.5%, while non-farm payroll surprisingly rose 263,000. In addition, OPEC+ agreed to impose deep production quotas cuts by 2 million b/d, double the amount of analyst projections, from November. These results would give the Fed confidence in taking a more hawkish monetary policy stance. Japanese markets will be closed for a national holiday on Monday, Oct. 10th.

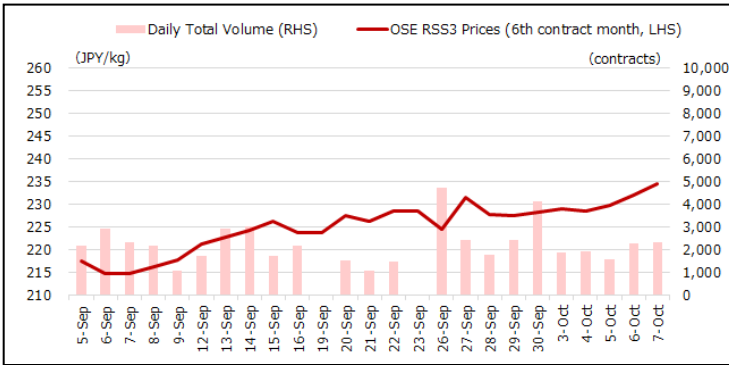
OSE RSS3	Last (JPY)	Net	SHFE/INE	Last (CNY)	Net	SICOM TSR20	Last (USc)	Net	TFEX	Last (THB)	Net
Oct 22	226.8	+0.8	SCR/RSS Jan23	13,200	-	Nov 22	137.9	+2.9	RSS3 Feb 23	59.45	+0.65
Nov 22	228.9	+1.4	SCR/RSS May23	13,100	-	Dec 22	137.1	+2.5	RSS3 Mar 23	60.50	+1.30
Dec 22	231.6	+3.8	Total Vol.	-	-	Jan 23	137.1	+2.3	JRF Feb 23	234.4	+7.4
Jan 23	231.5	+4.9	Total OI	225,552	-	Feb 23	137.3	+2.4	JRF Mar23	235.7	+6.7
Feb 23	233.2	+6.8	INE TSR Nov 22	10,005	-	Mar 23	137.7	+2.4	ICEX	Last (INR)	Net
Mar 23	234.5	+6.2	INE TSR Dec 22	10,005	-	Apr 23	138.0	+2.7	RSS4 Oct 22	Untraded	0
Total Vol.	10,006	-5,518	Total Vol.	-	-	Total Vol.	15,525	-26,321	MCX	Last (INR)	Net
Total OI	8,979	-958	Total OI	83,846	-	Total OI	47,133	+393	RSS4 Oct 22	16,300	untraded

Source: JPX

Source: SHFE, INE

Source: SGX

Source: TFE, ICEX, MCX



Source: JPX

Important Data / Stock levels	Last	Net
Japan OSE Rubber Stocks (ton, 30 Sep)	4,381	+182
Shanghai SHFE Rubber Stocks (ton, 30 Sep)	306,262	+3,701
Shanghai INE Rubber Stocks (ton, 30 Sept)	56,297	-3,226
China Vehicle Total Sales (unit, 31 Aug 22)	2,383,354	-36,704
China Passenger Car Sales (unit, 31 Aug 22)	2,125,260	-49,065
China Commercial Car Sales (unit, 31 Aug 22)	258,094	+12,361
US Unemployment Rate (% Sep)	3.5	-0.2
US Non-Farm Payroll (Sep)	263,000	-52,000
Japan Unemployment Rate (% Aug)	2.5	-0.1
Japan Manufacturing PMI (Sep)	50.8	-0.2
Japan Tankan Large Manufacturing (3Q)	8	-1
China Manufacturing PMI (Sep)	50.1	+0.7
China GDP 2Q (%)	+0.4	-4.4

Source: JPX, SHFE, Bloomberg

FOREX	Last	Net
USD/JPY	145.25	+0.51
EUR/USD	0.9744	-0.0058
GBP/USD	1.1086	-0.0084
USD/CHF	0.9944	+0.0074
AUD/USD	0.6375	-0.0025
USD/CNY	7.1159	0
USD/INR	82.3313	+0.9825
USD/SGD	1.4322	-0.0031
USD/MYR	4.6500	+0.0125
USD/THB	37.611	-0.236
USD/IDR	15,251	+24
USD/VND	23,882	+21

Source: Bloomberg

Stock Index	Last	Net
NK225 Japan	27,116.11	+1,178.90
TOPIX Japan	1,906.80	+70.86
Dow Jones US	29,296.79	+571.28
S&P 500 US	3,639.66	+54.04
Nasdaq US	10,652.40	+76.78
CSI 300 China	3,804.89	Holiday
Shanghai China	3,024.39	Holiday
HSI Hong Kong	17,740.05	+517.22
STI Singapore	3,145.81	+15.57
KLCI Malaysia	1,406.00	+11.37
SET Thailand	1,579.66	-9.85
IDX Indonesia	7,026.78	-14.02
VSE Vietnam	1,035.91	-96.20

Source: JPX, Bloomberg

JPX Derivatives	Last	Net
JPX NK225 Dec 22	27,100	+1,160
JPX TOPIX Dec 22	1,905.5	+69.5
JPX NK 400 Dec 22	17,125	+655
JPX TSE REIT Dec 22	1,934.0	-3.0
JPX NK 225 VI Oct 22	23.65	-1.45
JPX JGB 10 Year Dec 22	148.62	+0.32
JPX Gold 1 Kg Aug 23	7,948	+222
JPX Platinum Aug 23	4,103	+182
JPX Silver Aug 23	93.7	+8
JPX Palladium Aug 23	9,900	0
JPX TSR20 Jan 23	196.0	+4.8
JPX Corn Sept 23	50,340	+160
JPX Dubai Crude Feb 23	76,230	+6,320

Source: JPX

Technical Analysis on the OSE Mar-23 Contracts:

OSE active Mar-22 contracts closed JPY 6.2 higher at JPY 234.5 from the previous week. The week's last price closed above the resistance at 230.0 and approached the week's high of 234.7. The contracts traded above the 50-day moving average seem poised to try a higher price. The support level is expected at 230.0 and 226.5, while the resistance level is at 238.9, followed by 243.9. The 14-day RSI at the close price was 63.9, but the market doesn't seem to be at the overbought level. The Chinese market will resume on Monday, October 10th.



Source: Bloomberg

Technical Analysis on the SICOM Jan-23 Contracts:

SICOM Jan-23 contracts closed US cents 2.3 higher at US cents 137.1. The prices broke the short-term resistance level of 135.0 and gave a positive signal to try a higher price. Heavy rain and flooding in Thailand could have triggered speculative buying during the previous week. The support level is expected at 134.5 and 131.5, while the resistance level is at 138.5 and 142.5. The 14-day RSI was 56.4 at the close price on Friday, exceeding the neutral level of 50. The trading range in the following week is expected between 134.5 and 139.0.



Source: Bloomberg

Contact us

Kensuke Yazu

Derivatives Business Development
Osaka Exchange, Inc.

Tel: +81 (0) 50 3377 8645

Email: deri-w1@jpx.co.jp

Disclaimer

The copyrights for this document belong to Japan Exchange Group ("JPX"), and part or all of this document shall not be reproduced, republished, uploaded, linked, posted, transmitted, adapted, copied, translated, modified, edited, or otherwise displayed or distributed in any manner without JPX's prior consent.

This document is not an offer or solicitation to buy or sell, nor financial advice or recommendation for any investment product. This document is for the general circulation of the overview of JPX's futures markets only. It does not address any person's specific investment objectives, financial situation, or particular needs. Advice should be sought from a financial adviser regarding the suitability of any investment product before investing or adopting any investment strategies. Use of and/or reliance on this document is entirely at the reader's own risk. Investment products are subject to significant investment risks, including the possible loss of the principal amount invested. The past performance of investment products is not indicative of their future performance. The examples provided are for illustrative purposes only.

A designated person/company has compiled the information contained in this document from sources believed to be reliable. Still, no representation or warranty, express or implied, is made by JPX and the person/company as to its fairness, accuracy, completeness, or correctness. JPX shall not be responsible or liable, whether, under contract, tort including negligence or otherwise, for any loss or damage of any kind, whether direct, indirect, or consequential losses or other economic loss of any kind, including without limitation loss of profit, loss of reputation and loss of opportunity suffered or incurred by any person due to any omission, error, inaccuracy, incompleteness, or otherwise, any reliance on such information, or arising from and/or in connection with this document.