

# PRESS RELEASE

日本取引所グループ プレスリリース



株式会社日本取引所グループ

〒103-8224 東京都中央区日本橋兜町2番1号  
Tel : 03-3666-1361 (代表)

JAPAN EXCHANGE GROUP, INC.  
2-1, Nihombashi-Kabuto-cho, Chuo-ku,  
Tokyo 103-8224, Japan  
Tel : +81-3-3666-1361

URL: <http://www.jpx.co.jp/>

March 30, 2021

Japan Exchange Group, Inc.

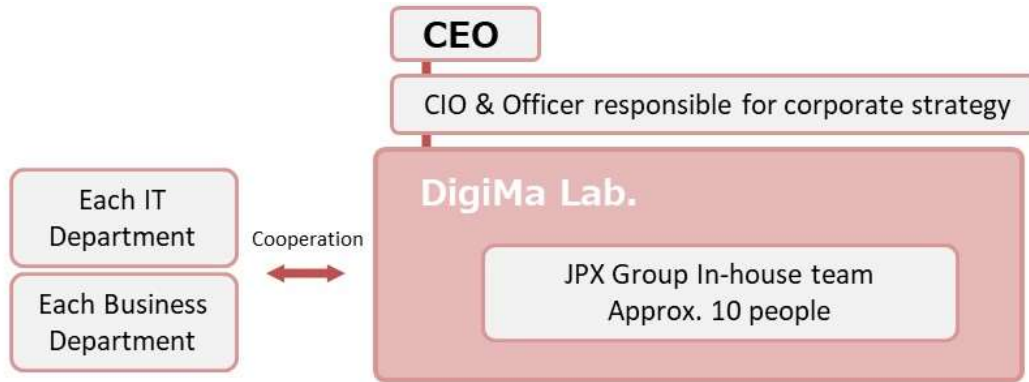
## **Establishment of Center for Advanced Research and Development: DigiMa Lab.**

Japan Exchange Group, Inc. (JPX) will establish a center for advanced research and development: DigiMa Lab. (Center) to design a future vision of JPX on April 1, 2021.

The establishment of the Center is in response to a proposal published in a November 2020 report from The Investigation Committee of Independent Outside Directors in Relation to the System Failure: to consider further enhancements to in-house system development capabilities, design supervision skills, and maintenance capacity. The scope of the Center is not limited to these activities. It will work in a wide range of areas such as creating with users a new concept market as well as exploring an overall system design that will allow JPX to maintain and enhance its business competitiveness.

Through such efforts at the Center, JPX will be committed to accelerating digital transformation, further improving resilience, and enhancing the experience of investors, listed companies, market participants, and other stakeholders.

(Diagram)



### 1) DX Promotion

Continued promotion for DX initiatives

Strengthening current IT and business

- Further promoting company-wide DX initiatives since April 2020
- Verifying technology for improving resilience of the current system also in progress

### 2) Concept Market

FY2021

Incorporating External (Non-financial) IT and business

- To challenge the business and system which are free from existing limitations, creating a "concept market", much like a concept car for automobiles which users can experience.
- Attempting various approaches to resilience in reference to non-financial services
- Improving the in-house ratio

### 3) Overall System Design

Starting in 2021

Considering a long-term view

Considering an overall system design that enhances and maintains JPX business competitiveness by leveraging input from 1) and 2)

(Inquiries)

Corporate Strategy/IT Planning, Japan Exchange Group, Inc.

Phone: +81-(0)3-3666-1361 (Switchboard)