

The Japan Rubber Futures Weekly Report:

04 April 2022 – 08 Apr 2022

Note: Japan Mar Services PMI 49.4, Feb Household Spending weaker at +1.1%, Feb Leading Index weaker at 100.9

Rubber Futures Report:

Rubber futures prices closed the week mostly mixed in the main rubber exchanges. OSE futures were higher with active trading stemming from transactions of funds and fresh-speculative buying. The weak JPY and tighter bid/offer spreads on OSE RSS3 also attracted new market participants. Both SHFE and INE rubber futures fell on new speculative selling amid light trading volume after Shanghai lock-down went into extension. SICOM futures closed the week slightly lower on long liquidation and profit taking. China weekly rubber warehouse stocks were higher with SHFE +900 tonnes and INE +4,537 tonnes respectively. US reported lower vehicle sales of 13.3m units in April as compared to 14.07m units in March. On world news, global stocks were mostly down on the continuing war in Ukraine and as more sanctions were put on Russia. The Fed is likely to be aggressive in tightening monetary policy with 0.5% interest rate hike on 4 May. FOMC meeting is also putting pressure on the global stock markets. US is threatening to skip G-20 meeting in Bali on 15-16 Nov if Russia attend the meeting. Crude oil prices fell sharply after EIA released 120m barrels.

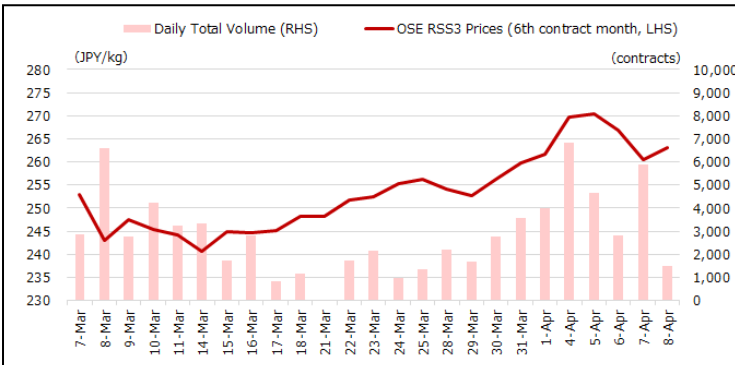
OSE RSS3	Last (JPY)	Net	SHFE/INE	Last (CNY)	Net	SICOM TSR20	Last (USC)	Net	TFEX	Last (THB)	Net
Apr 22	265.0	+7.7	SCR/RSS May22	13,325	-355	May 22	174.3	+0.7	RSS3 Aug 22	69.80	-3.30
May 22	264.2	+4.3	SCR/RSS Sep22	13,545	-325	Jun 22	173.8	-1.0	RSS3 Sep 22	69.80	-3.65
Jun 22	263.8	+4.7	Total Vol.	820,853	-922,928	Jul 22	174.3	-1.0	JRF Aug 22	263.5	+3.6
Jul 22	261.6	+4.1	Total OI	342,479	+22,987	Aug 22	174.9	-0.8	JRF Sep 22	263.6	+1.3
Aug 22	261.9	+2.5	INE TSR Jun 22	11,285	-220	Sep 22	175.3	-0.8	ICEX Last (INR)	Net	
Sep 22	263.0	+1.2	INE TSR July 22	11,370	-215	Oct 22	175.8	-0.8	RSS4 Apr 22	17,491	0
Total Vol.	21,655	+7,476	Total Vol.	107,116	-135,684	Total Vol.	22,143	+1,655	MCX Last (INR)	Net	
Total OI	9,248	+1,097	Total OI	69,475	+4,971	Total OI	37,157	-1,786	RSS4 Apr 22	17,350	-400

Source: JPX

Source: SHFE, INE

Source: SGX

Source: TFEX, ICEX, MCX



Source: JPX

Important Data / Stock levels	Last	Net
Japan OSE Rubber Stocks (ton, 31 Mar)	8,268	+98
Shanghai SHFE Rubber Stocks (ton, 08 April)	258,910	+900
Shanghai INE Rubber Stocks (ton, 08 April)	111,788	+4,537
China Vehicle Total Sales (unit, 28 Feb22)	1,737,386	-793,198
China Passenger Car Sales (unit, 28 Feb22)	1,487,442	-698,902
China Commercial Car Sales (unit, 28 Feb22)	249,944	-94,296
US Unemployment Rate (% Mar)	3.6%	-0.2
US Non-Farm Payroll (Mar)	431,000	-319,000
Japan Unemployment Rate (% Feb)	2.7	-0.1
Japan Manufacturing PMI (Mar)	53.2	+0.5
Japan Tankan Large Manufacturing (1Q)	+14	-3
China Manufacturing PMI (Mar)	49.5	-0.7
China GDP 4Q (%)	+4.0	-0.9

Source: JPX, SHFE, Bloomberg

FOREX	Last	Net
USD/JPY	124.34	+1.82
EUR/USD	1.0877	-0.0166
GBP/USD	1.3025	-0.0089
USD/CHF	0.9343	+0.0079
AUD/USD	0.7458	-0.0038
USD/CNY	6.3650	+0.0021
USD/INR	75.905	+0.1163
USD/SGD	1.3636	+0.0066
USD/MYR	4.2213	+0.0091
USD/THB	33.589	+0.124
USD/IDR	14,362	-8
USD/VND	22,865	+22

Source: Bloomberg

Stock Index	Last	Net
NK225 Japan	26,985.80	-680.18
TOPIX Japan	1,896.79	-47.48
Dow Jones US	34,721.12	-97.15
S&P 500 US	4,488.28	-57.58
Nasdaq US	13,711.00	-550.50
CSI 300 China	4,230.77	-45.39
Shanghai China	3,251.85	-30.87
HSI Hong Kong	21,872.01	-167.54
STI Singapore	3,383.28	-35.83
KLCI Malaysia	1,607.29	+4.88
SET Thailand	1,688.70	-11.54
IDX Indonesia	7,210.84	+132.08
VSE Vietnam	1,482.00	-34.44

Source: JPX, Bloomberg

JPX Derivatives	Last	Net
JPX NK225 Jun 22	27,040	-620
JPX TOPIX Jun 22	1,898.0	-43.5
JPX NK 400 Jun 22	17,100	-445
JPX TSE REIT Jun 22	1,964.0	-50.0
JPX NK 225 VI Apr 22	21.65	-0.60
JPX JGB 10 Year Jun 22	149.49	-0.21
JPX Gold 1 Kg Feb 23	7,683	+83
JPX Platinum Feb 23	3,790	-50
JPX Silver Feb 23	98.3	+0.6
JPX Palladium Feb 23	8,700	0
JPX TSR20 July 22	215.0	+2.8
JPX Corn Mar23	52,980	+2,470
JPX Dubai Crude Sep 22	72,620	+1,640

Source: JPX

Rubber Trading – Technical Analysis OSE Sep Futures:

OSE Sep futures settled at 263.0 (+1.2) with relatively active trading. Weekly volume soared to 21,655 lots (+7,476) and active trading of some funds and speculative buying were heard. It touched a high of 275.1 before retreating to close at 263.0. Support is seen at 257.0 then followed by stronger support 252.7 (50 MA) and resistance is now at 271.5 and 275.1 (recent high). 14-day RSI is at 58.4%. Prices is likely to continue trending higher as the chart looks bullish with new highs broken last week.



Source: Bloomberg

Rubber Trading – SGX SICOM June Futures Technical Analysis:

SICOM June futures traded higher in the early week but eased in the late week to close at 173.8 (-1.0). Trading was moderately active but strong profit taking and liquidation pushed prices down. SICOM prices were closely following the weak Chinese market and closed the week lower. June futures support is seen at 171.5-172.0 with resistance at 175.5 and stronger resistance at 178.4, 14 days RSI is at 46.1%. Prices in the mid-term are expected in the range of 170-179 before any breakout is seen.



Source: Bloomberg

Contact us

Kensuke Yazu

Derivatives Business Development
Osaka Exchange, Inc.

Tel: +81 (0) 50 3377 8645

Email: deri-w1@jpx.co.jp

Disclaimer

The copy rights for this document belong to Japan Exchange Group ("JPX") and part or all of this document shall not be reproduced, republished, uploaded, linked, posted, transmitted, adapted, copied, translated, modified, edited or otherwise displayed or distributed in any manner without JPX's prior consent.

This document is not an offer or solicitation to buy or sell, nor financial advice or recommendation for any investment product. This document is for general circulation of overview of JPX's Futures Markets only. It does not address the specific investment objectives, financial situation or particular needs of any person. Advice should be sought from a financial adviser regarding the suitability of any investment product before investing or adopting any investment strategies. Use of and/or reliance on this document is entirely at the reader's own risk. Investment products are subject to significant investment risks, including the possible loss of the principal amount invested. Past performance of investment products is not indicative of their future performance. Examples provided are for illustrative purposes only.

The information contained in this document has been compiled by a designated person/company from sources believed to be reliable, but no representation or warranty, express or implied, is made by JPX and the person/company as to its fairness, accuracy, completeness or correctness. JPX shall not be responsible or liable, whether under contract, tort including negligence or otherwise, for any loss or damage of any kind, whether direct, indirect or consequential losses, or other economic loss of any kind, including without limitation loss of profit, loss of reputation and loss of opportunity suffered or incurred by any person due to any omission, error, inaccuracy, incompleteness, or otherwise, any reliance on such information, or arising from and/or in connection with this document.

The information in this document is subject to change without notice and is provided in good faith but without legal responsibility or liability