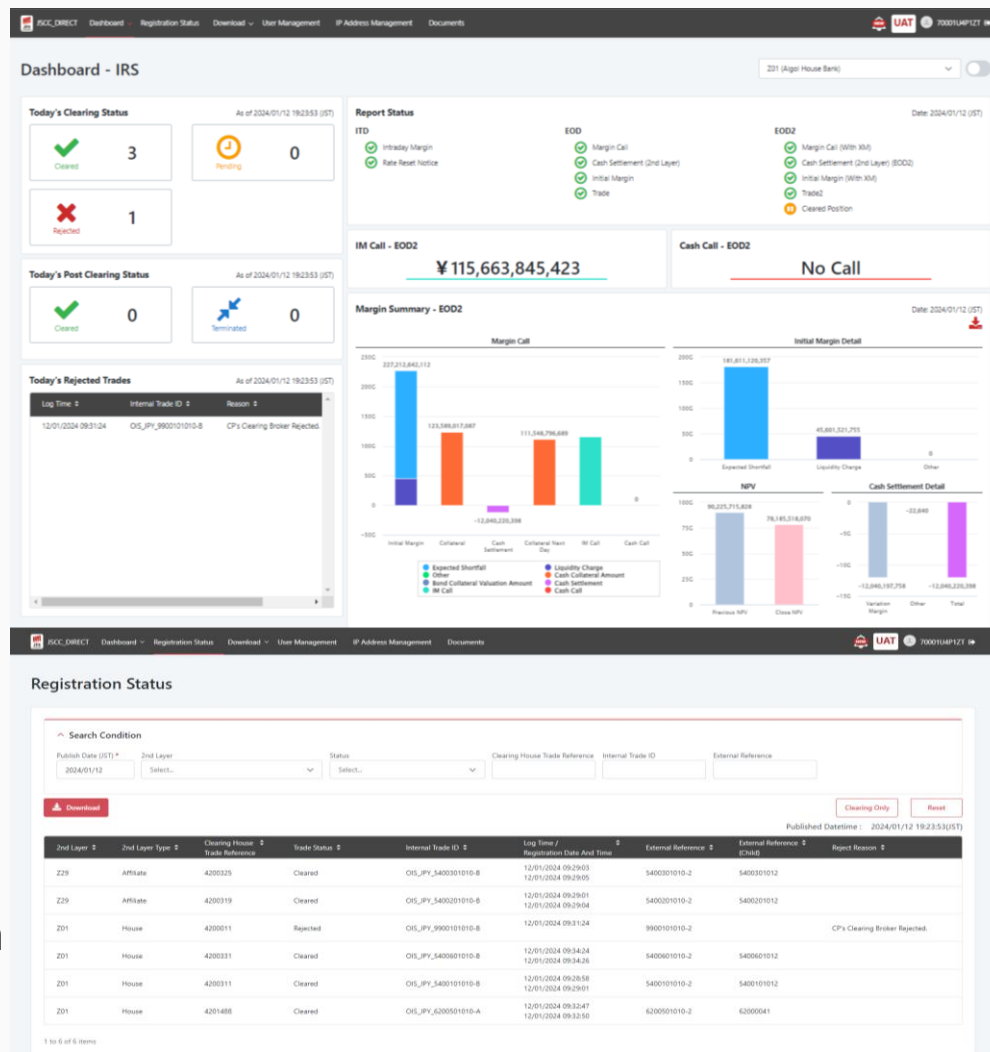


Free Web Interface from Anywhere

- JSCC Direct is a web-based interface enabling all users to access JSCC via internet without any fees.

Features

- Clearing Status
- Report Status
- IM/Cash Call Status
- Margin Summary
- Report Download
- Document List
- GUI, API and SFTP supported
- Available through Tokyo business day 0:00 to 24:00. Will be available until 31:00 if the following day is a non-Tokyo business day,
- Access through internet
- Improving security by IP address verification



How to Start

- It will take approx. 1week (5 business days) from the application to start using. (If your firm has an urgent need, please contact JSCC.)

Event

Detail

i) Submit Application Forms
at least 5 JSCC business days
prior to your preferred start
date using the production
environment

Submit "JSCC Direct Application and
Reference Unit Application Form" to
JSCC

- Please submit the application form
For Customers, please submit the
application form through your Clearing
Broker.
*If you wish for a test in the test
environment prior to using the production
environment, please contact JSCC.

ii) Receive Login ID/PW
On the start date

Receive JSCC Direct
login credentials

- As soon as an assignment of the account
for the production environment is
completed, JSCC will give an e-mail
notification to the applicant (or Clearing
Broker, if the applicant is a Customer).
- For the Clearing Participant, please check
the e-mail and acquire the Utilization
Acknowledgment and login information
from WebPortal. (When the applicant is a
Customer, its Clearing Broker should
acquire the above information from
WebPortal and communicate to the
Customer.)

Start Utilization

Procedures for JSCC Direct Utilization

Contact	JSCC OTC Derivatives Clearing E-mail: otc@jpx.co.jp
Hours Available	9:00 – 17:00 in JST (Excluding Saturdays, Sundays and Japanese national holidays)

- For other inquiries after the JSCC Direct utilization is started, please reach out to the contact point specified in JSCC Direct Startup Guide.